



Agricultural Interoperability Network

- Closing the gap in Ag data exchange

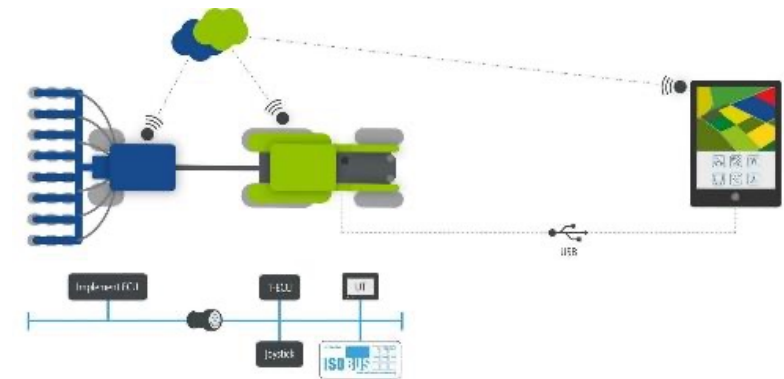


Norbert Schlingmann
General Manager
AEF e.V., Germany

AgGateway Europe – March 14, 2025 – Berlin, GER

The AEF

- **A**gricultural **I**ndustry **E**lectronics **F**oundation
 - Founded in 2008; 8 major agricultural equipment manufacturers and 3 trade associations
 - Over 290 member companies
- Worldwide support of ISOBUS implementation
 - Structured in up to 19 different teams
 - Supported by 5 international test labs to certify products
- Define guidelines for Ag industry
 - Focus on Tractor – Implement connection using ISOBUS
 - Data exchange between machines and clouds
 - Coordinate activities and developments



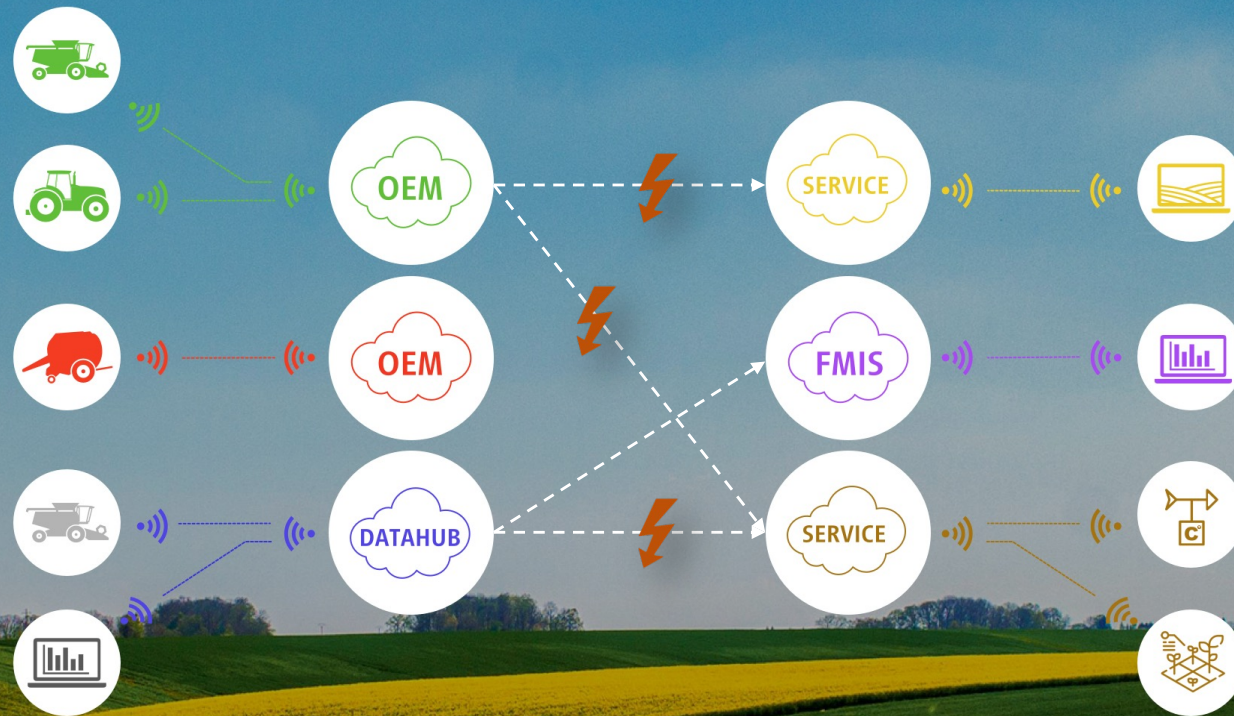
AEFs vision for digital farming



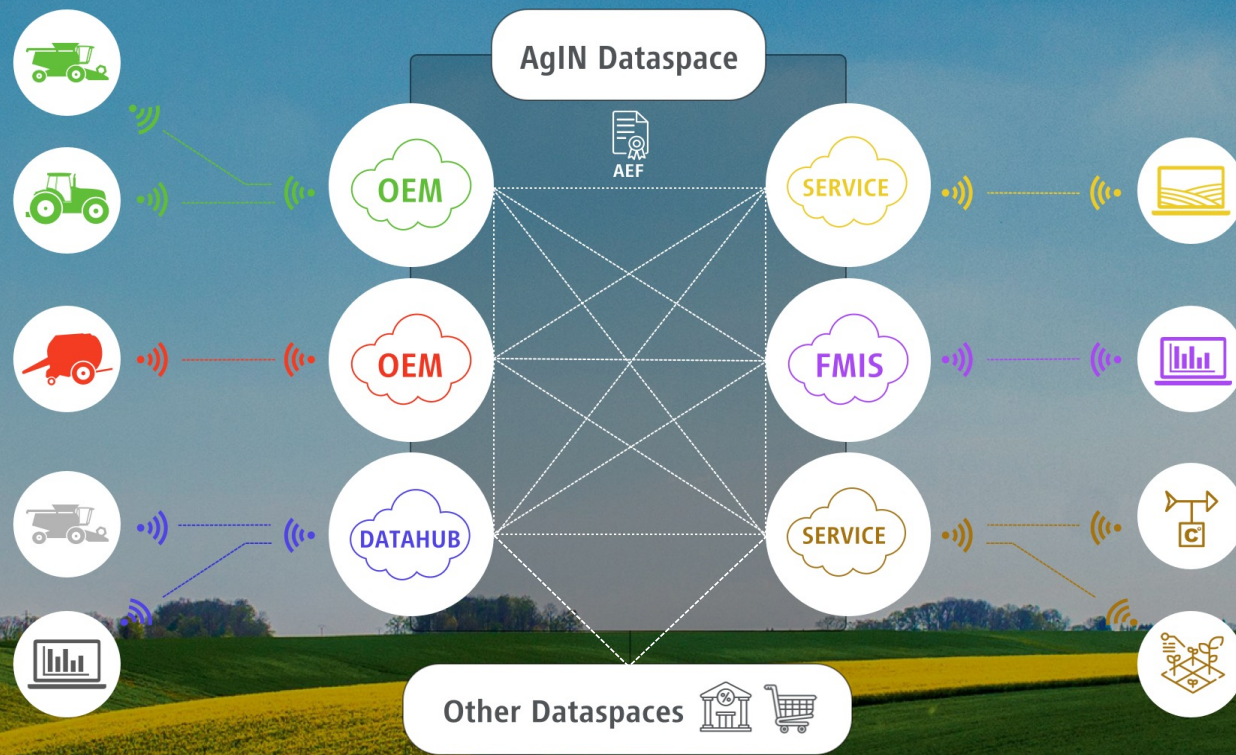
Agricultural Interoperability Network (AgIN) – Purpose and Mission

- Simplify and improve data exchange to enhance interoperability.
- Foster collaboration between members, partners and related initiatives towards creating an industry-wide solution
- Addresses aligned Ag industry wide use-cases.
- AEF members joining AgIN network with their existing clouds and access each other's services on a peer-to-peer basis.
- Each participant will continue to host its own platform and service and will gain access to connect with other AgIN participants.
- AgIN will not exclude data routers or data hubs.
- AgIN is not a new platform.

Agricultural Data – Need for Seamless Interoperability



AgIN enables – Peer to Peer Network

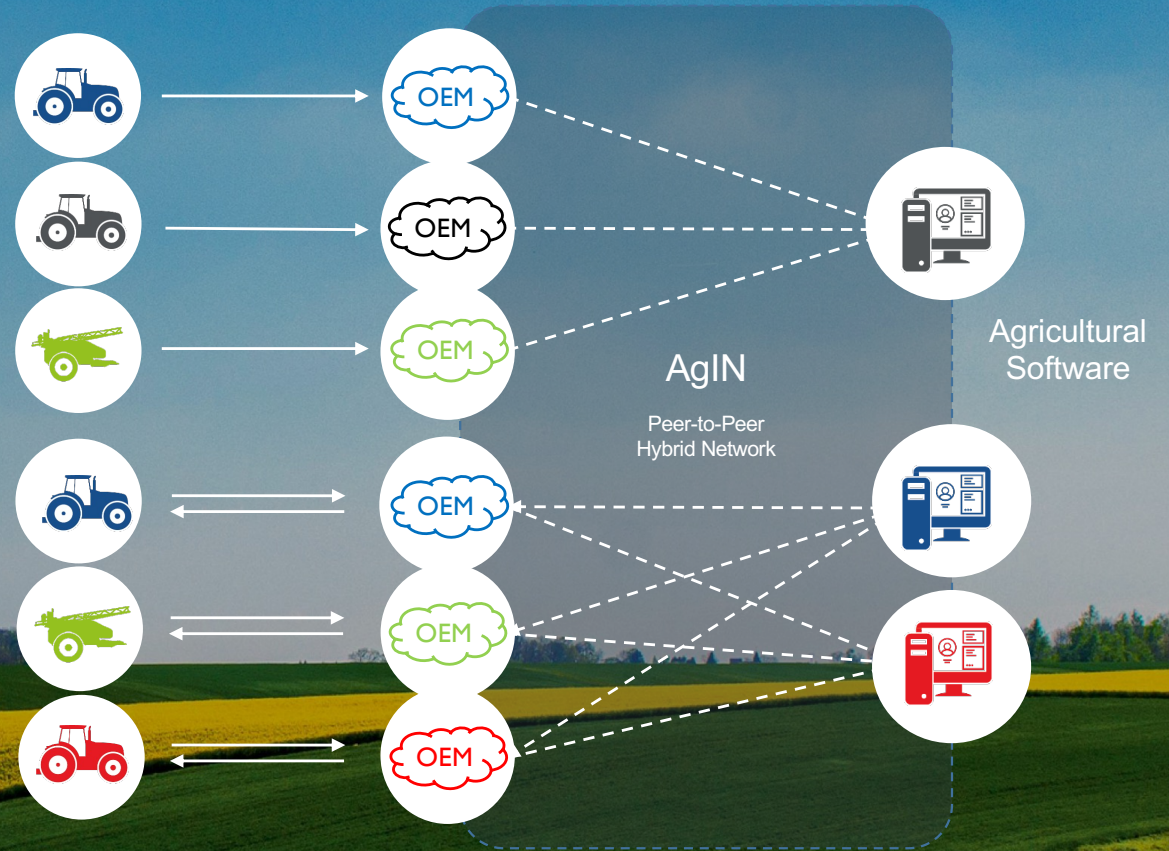


AgIN – Use Cases

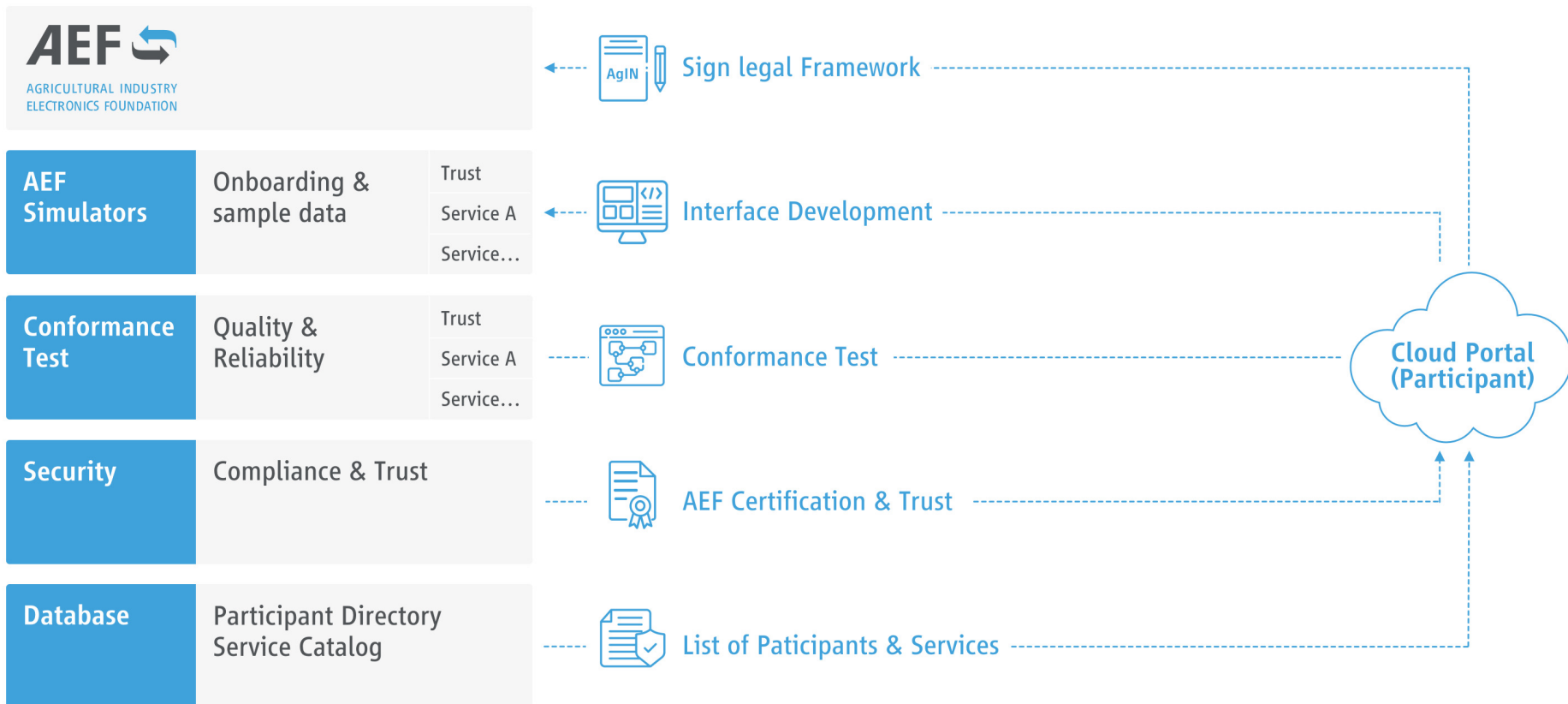
- Machine Tracking

- Online Task-Management

- Work Order
- Word Record / Documentation

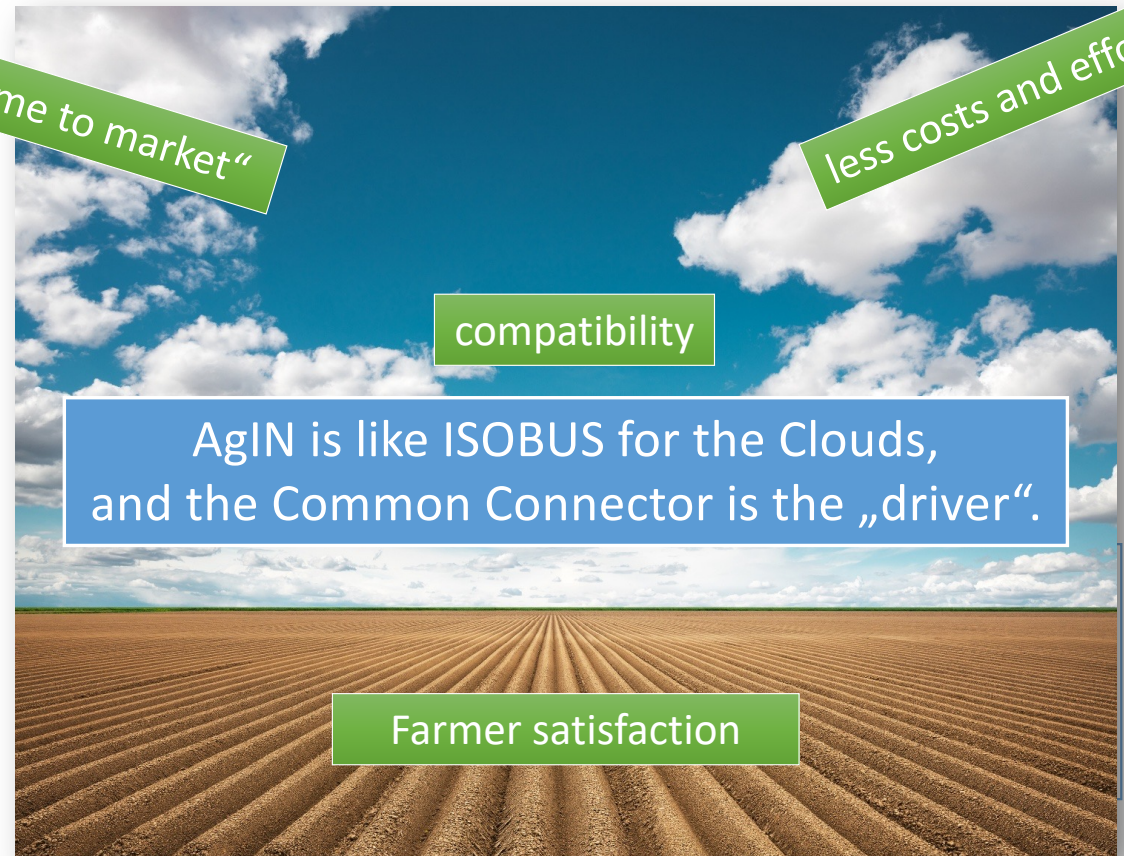


AEF Infrastructure as an anchor of trust and enabler

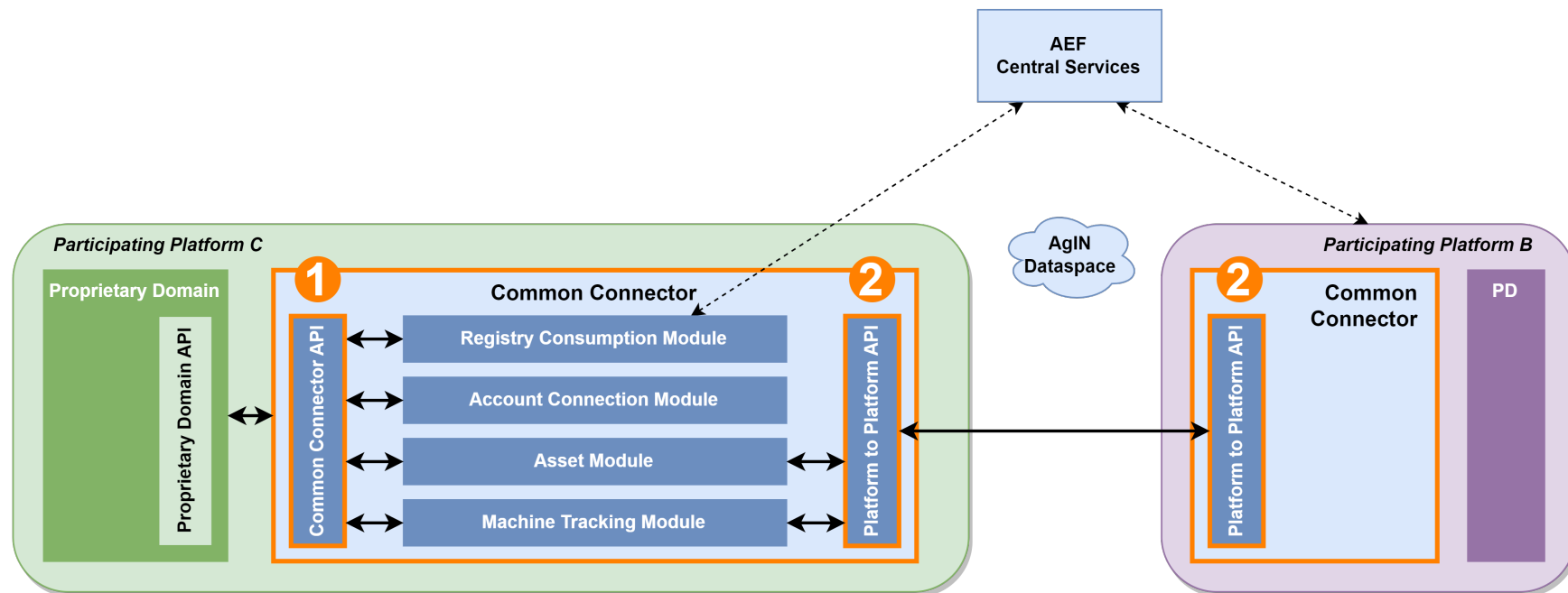


AgIN Common Connector as concept decision

- A scalable and easy to use application
- Use standards and state of the technology



How does it work? – The Common Connector Architecture



- 1) **Proprietary Domain Interface:** Connection to the host platform's internal systems
- 2) **Platform-to-Platform Interface:** Standardized communication with other platforms

Starter package and benefits

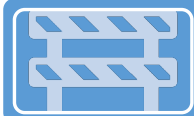
Common Connector Starter Package



CC = Container Application



Documentation



Onboarding Support for AT25



Access to reference platform

Benefits

- Less efforts, complexity and risk
- High Quality Industry Software: Specified, developed and tested from first class experts
- Cost-effective opportunity to participate in AgIN
- Access to improvements and new functionalities
- Accelerated onboarding

AgIN benefits

- AgIN will be a scalable data space for agriculture
 - One API to AgIN Data Space and CEADS
 - Open to host and facilitate further services and use cases
 - End-User controls account based Peer-2-Peer data exchange
 - No central data transfer, creates benefits such as avoiding risk of Single Point of Failure
- AEF Infrastructure as enabler
 - One legal framework
 - Industrywide trust anchor
 - Enriched by AEF Simulators & Conformance Test
 - Accelerated by Common SW modules
- Global approach
 - No regional restrictions
 - Global Use Cases

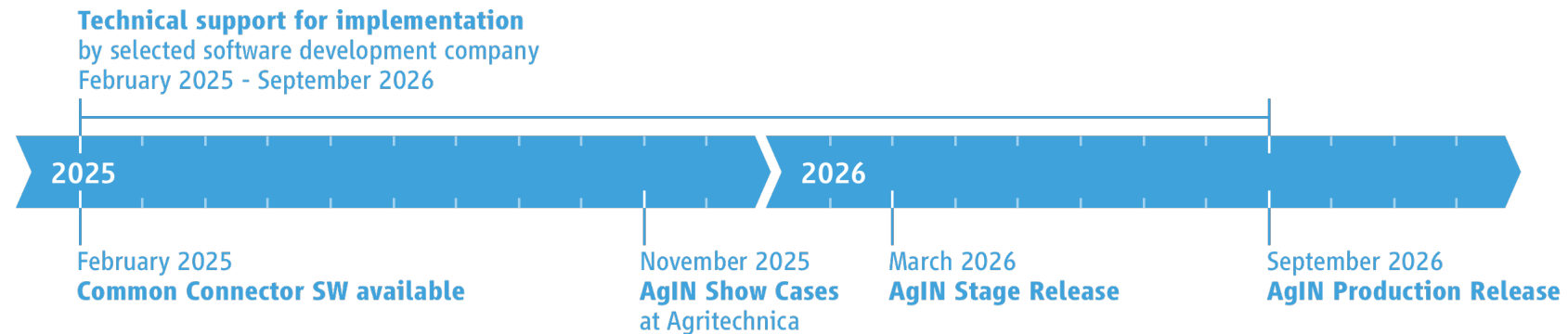
AEF partner in EU project CEADS



CEADS: Common European Agricultural Data Space

AgIN – Roadmap and next steps

- Roadmap



- Next Steps

- Member companies to sign in for joining the network
- Preparation of Agritechnica showcase – Details will be announced soon
- More information on AEF website: [AgIN Landing Page](#)

AgIN – Closing the gap in Ag data exchange

- AgIN is a scalable data space for agriculture
- Use-case based data exchange will simplify, improve and enhance interoperability
- AEF Infrastructure as enabler – End user and farmer to use well known platform
- Development has not only been started – a first **release is available!**
- Show case during Agritechnica in Hanover, GER in Nov 2025
- Data Space Initiatives arise all around us
 - ➔ Have the unique **opportunity** to shape the future in our industry



Thank you

